



Angel India

Angel India CAD CAM Pvt. Ltd.



Angel India CAD CAM Pvt. Ltd.

Plot Kh. 38/4 Near Tikari Metro Station, Rohtak Road, Tikari, New Delhi-110041

E-mail: info@angelindiaimpex.com, **Like us:** [f/angelindiacadcam](https://www.facebook.com/angelindiacadcam)

Web: www.angelindiaimpex.co.in, www.angelindiaimpex.net

Contact : 9810493987, 9811031738, 9963855653, 8826804063

ANGEL PRESS BRAKE

In a normal press brake, the slide stroke can be set to stop for one time, which wastes time during the processing of complex workpieces. However, the Angel hydraulic press brake features a programmable slide stroke to stop at any time, thereby increasing the processing efficiency and making this equipment ideal for factories requiring mass production to obtain a significant financial return in a small amount of time.



The overall machine structure is made of a high-performance carbon steel that has undergone a stress relieving treatment, with a maximum pressure capacity of up to 100 tons to ensure our press brakes feature a high accuracy and strength, even under long term heavy loads. A special mark line bending function ensures our press brake finds the marking line quickly and accurately, and thus, improving the processing efficiency.

If you need CNC press brake for mass bending parts, Angel India ANRG is an ideal choice as we not only provide high quality products, but professional technology and thoughtful, comprehensive services.

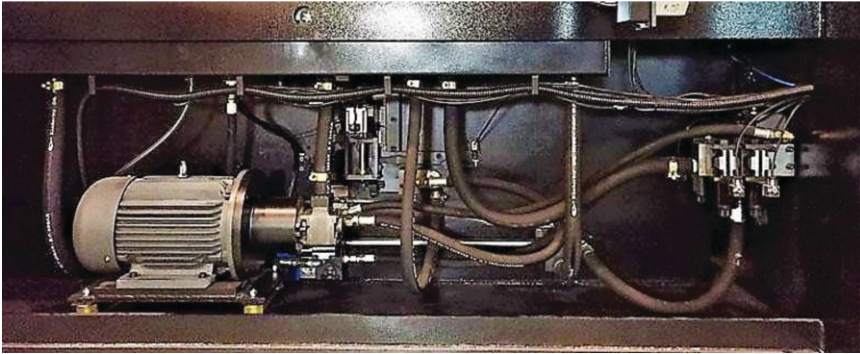
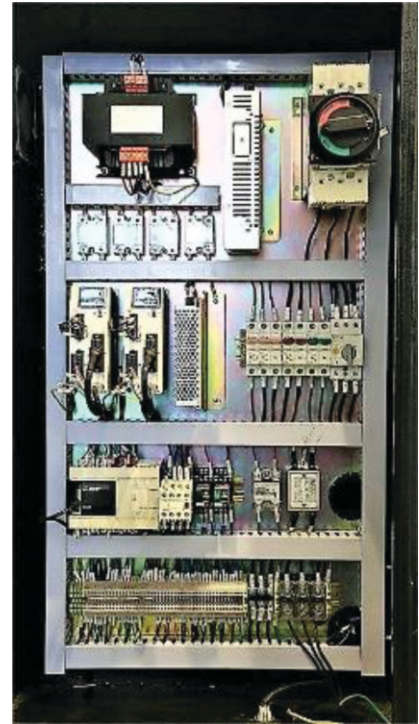
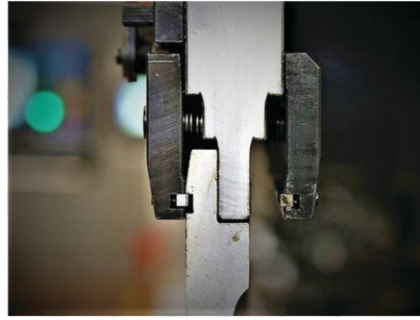
Product Details

- ★ The overall machine structure is a high-performance carbon steel with rust resistant paint, giving the press brakes a high strength and long service life.
- ★ All major components have been subjected to stress relieving treatment.
- ★ The slide stroke can be manually set for a single time.
- ★ With the use of a forced synchronization system, parallelism is maintained between the ram and the work table to effectively guarantee the bending accuracy.
- ★ The hydraulic circuit is simple and easy to maintain.
- ★ A rolling guide is used to keep the operation process flexible and decrease noise emissions.
- ★ The servo driven back gauge finger is CNC controlled, ensuring the metal bending machine has a fast response and positioning.
- ★ The CNC controller's rotating arm ensures a flexible operation as it rotates freely in the operation area.

Operating Features

- ★ Users can choose their language on the 10-inch LCD colour touch screen.
- ★ Data variable adjustments are completed via a manual hand wheel or keyboard input.
- ★ The calculation system is used to calculate the co-ordinates of the D axis, L axis, clamp point and bending angle.
- ★ The computer is equipped with an online assistance system to guide operation, prompt faults, and guide simple maintenance.
- ★ The back-gauge finger features a programmable retraction function to process complex units.
- ★ Sound prompting and indicator light flashing activate when the sheet panel is positioned in place.
- ★ The bottom time delay and clamping delay are set to ensure the bending process is smoother.
- ★ Low speed bending technology is used to protect the workpiece bending surface and prevent accidents caused by the bending process.

Accessories



Machine Specifications

TYPE		3512 II	5020 II	1003 II
Pressure Capacity		350KN	500KN	1000KN
Bending Length		1200mm	2000mm	3100mm
Length of Stroke		100mm	100mm	100mm
Maximum Pressure		1	1	3
Number of Oil Tank		28.66Mpa	28.3Mpa	33.8Mpa
Speed	Rise	37-47mm/sec	37-47mm/sec	37-47mm/sec
	Bend	7.5-10mm/sec	7.5-9.2mm/sec	7.5-10mm/sec
	Descent	47-66mm/sec	47-66mm/sec	47-66mm/sec
Motor Power		3kw	4kw	7.5kw
Oil Tank Capacity		27L	44L	65L
Weight		2200kg	3450kg	6400kg
Outside Width of Frame		1200	2000	3000
Inside Width of Frame		1020	1720	2550
Throat Dept		200	405	405
Distance between Upper and Lower Worktable		250	250	250
Daylight Opening		370	370	370
Height of Lower Worktable		990	941	1030
Total Height		2070	2100	2421
Side Plate Height		1780	1783	2106
Machine Width		1423	2192	3340
Total Width		2220	3140	4210
Total Depth		1020	1315	1436



Angel India CAD CAM Pvt. Ltd.

Plot Kh. 38/4 Near Tikari Metro Station, Rohtak Road, Tikari, New Delhi-110041

E-mail: info@angelindiaimpex.com, **Like us:** [f/angelindiacadcam](https://www.facebook.com/angelindiacadcam)

Web: www.angelindiaimpex.co.in, www.angelindiaimpex.net

Contact : 9810493987, 9811031738, 9963855653, 8826804063